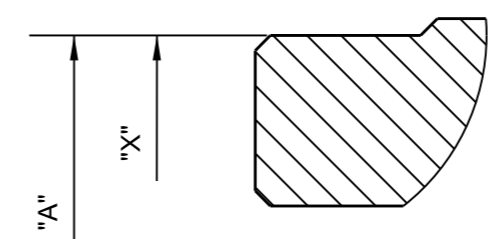
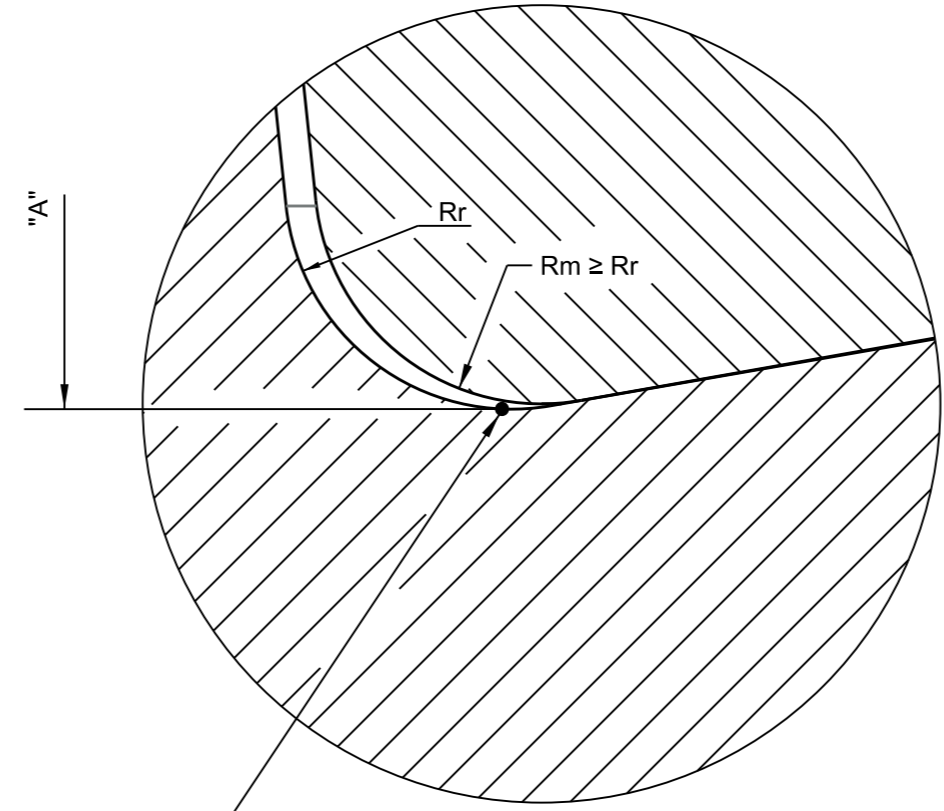


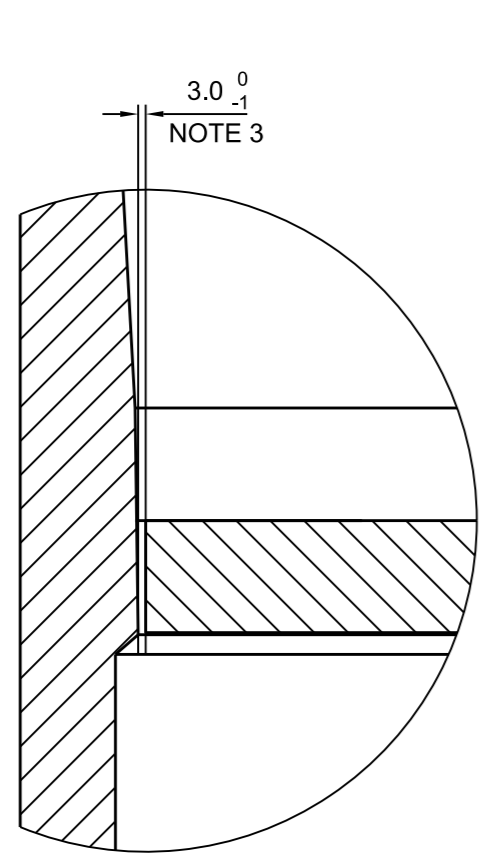
SECTION A-A



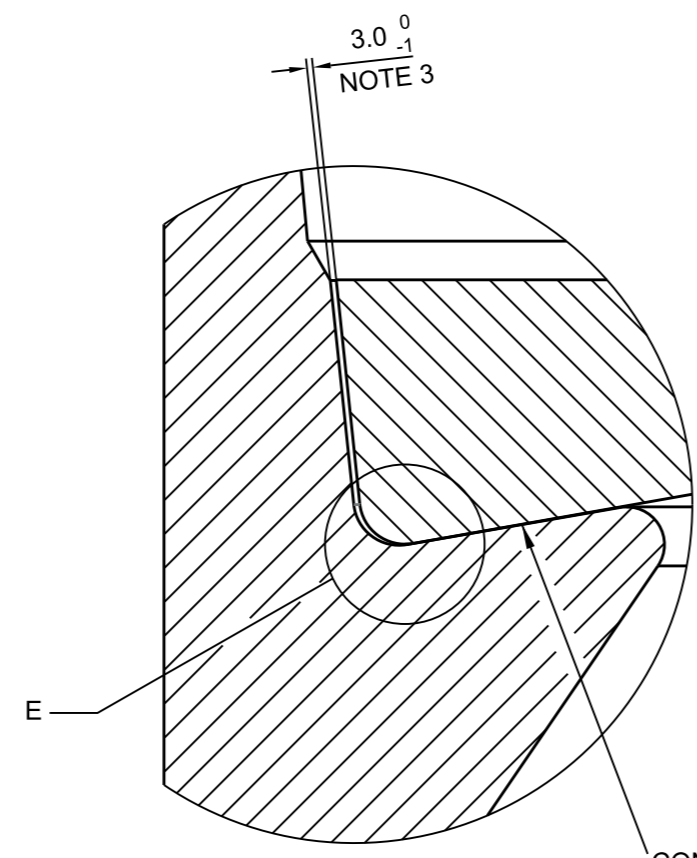
DETAIL B
SCALE 1:5



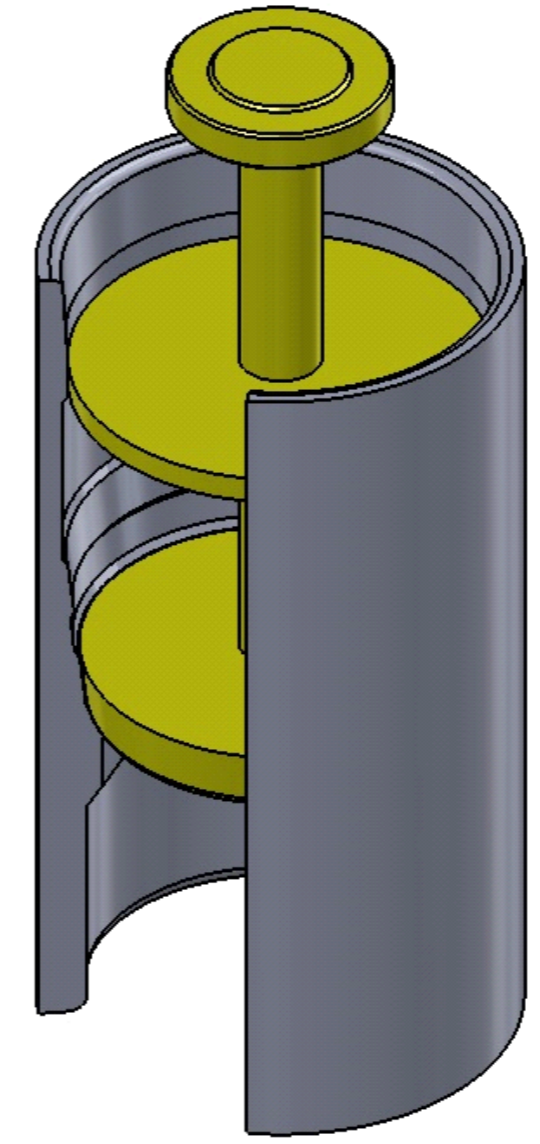
DETAIL E
SCALE 1:1



DETAIL C
SCALE 1:5



DETAIL D
SCALE 1:5



DOCUMENTS OF REFERENCE

- 1 - (*) - INPUT DATA FOR FLEXIBLE JOINT/ TITANIUM STRESS JOINT DESIGN.
- 2 - (*) - SPREAD MOORING RISER SYSTEM REQUIREMENTS.
- 3 - I-ET-0000.00-0000-290-P9U-003 - FLEXIBLE JOINT AND CONICAL RECEPTACLE SPECIFICATION.
- 4 - I-ET-0000.00-0000-290-P9U-004 - TITANIUM STRESS JOINT SPECIFICATION.
- 5 - I-DE-0000.00-1350-140-P9U-001 - CONICAL RECEPTACLE "TYPE A" FOR DIRECT PULL-IN.
- 6 - I-DE-0000.00-1350-140-P9U-002 - CONICAL RECEPTACLE "TYPE B" FOR DIRECT PULL-IN.
- 7 - I-DE-0000.00-1350-140-P9U-003 - CONICAL RECEPTACLE "TYPE C" FOR DIRECT PULL-IN.
- 8 - I-DE-0000.00-1350-140-P9U-004 - CONICAL RECEPTACLE "TYPE A" FOR KEEL HAULING PULL-IN.
- 9 - I-DE-0000.00-1350-140-P9U-005 - CONICAL RECEPTACLE "TYPE B" FOR KEEL HAULING PULL-IN.
- 10 - I-DE-0000.00-1350-140-P9U-006 - CONICAL RECEPTACLE "TYPE C" FOR KEEL HAULING PULL-IN.

(*) PROJECT REFERENCE NUMBER TO BE ISSUED DURING EPCI BID PHASE. DEFINITION OF THE RISER TOP CONNECTOR (FLEXIBLE JOINT OR STRESS JOINT) SELECTED FOR A SPECIFIC PROJECT WITHIN PROJECT DOCUMENTATION.

GENERAL NOTES

- 1 - ALL MEASURES ARE IN MILLIMETERS, EXCEPT WHERE INDICATED.
- 2 - PROJECT SELECTED STANDARD RECEPTACLE TYPE(S), ACCORDING TO SPECIFIC DRAWING(S) IN REF. [5] TO REF. [10], TO BE INFORMED DURING BID PHASE.
- 3 - THIS IS THE ALLOWABLE GAP BETWEEN RECEPTACLE AND MOCK-UP, CONSIDERING THE FABRICATION TOLERANCES OF THESE TWO COMPONENTS (OVER FINISHED SURFACE, AFTER COATING APPLICATION). RECEPTACLE TOLERANCES AS PER REF. [5] TO REF. [10].
- 4 - THE BOTTOM PROFILE OF THE MOCK UP SHALL MATCH THAT OF RISER TOP CONNECTOR BASE, OR SHALL INTERFACE THE RECEPTACLE BOTTOM CONTACT SURFACE UP TO THE RADIUS "Rm". THE MOCK UP BOTTOM EDGE RADIUS "Rm" SHALL MATCH THE RISER CONNECTOR'S, OR SHALL BE EQUAL TO OR GREATER THAN THE RECEPTACLE BOTTOM EDGE RADIUS "Rr" AS SHOWN IN "DETAIL E".
- 5 - THE REFERENCE BOTTOM EDGE FOR ELEVATION "A" IS THE "POINT C", I. E. THE RECEPTACLE CONTACT SURFACE'S LOWEST EDGE IN "DETAIL E". THE ACTUAL HEIGHT OF THE RISER TOP CONNECTOR AND THE MOCK-UP SHALL TAKE INTO ACCOUNT THE LATERAL GAPS WITH RECEPTACLE AND ANY CENTRALIZER PIECE OR BUSHING ASSEMBLED ON THE RISER TOP CONNECTOR BOTTOM PART.
- 6 - THE DIMENSION "X" IS AN ALTERNATIVE DIMENSION FOR FLANGE ELEVATION CONTROL DURING FIT-UP.
- 7 - BLIND FLANGE WITH THE SAME SPECIFICATION OF THE SELECTED RISER TOP CONNECTOR, INCLUDING N2 TEST PORT IF SPECIFIED, AS PER REF. [1] OR REF. [2].

REV.	DESCRIPTION	DATE	EXEC.	CHECK	APPROV.
0	ORIGINAL	18/05/18	TS8H/EE93	U43H	QM63

THE INFORMATION CONTAINED IN THIS DOCUMENT IS PETROBRAS PROPERTY AND MAY NOT BE USED FOR PURPOSES OTHER THAN THOSE SPECIFICALLY INDICATED HEREIN.
FORM BELONGING TO THE NORM PETROBRAS N-381 REV. L.
Microstator V8i/Ss3 EDITION - I-DE-0000.00-0000-140-P56-001=0.dgn
THE IMPRESSION OR REPRODUCTION OF THIS DOCUMENT TURN THE COPY NO CONTROLLED. TO VERIFY HIS UPDATING BEFORE USING HER.

		DP&T	
CLIENT: E&P			
JOB: STANDARDIZATION			
AREA: DP&T-SUB			
TITLE: RISER TOP CONNECTOR MOCK-UP GEOMETRY REFERENCE			
DESIGN: EDR	EXEC: TS8H / EE93	CHECK: U43H	APPROV.: QM63
SCALE: 1:20	CAT.: DRAWING	COD.: -	SHEET: 1 OF 1
DATE: 18/05/2018		Nº: I-DE-0000.00-0000-140-P56-001	