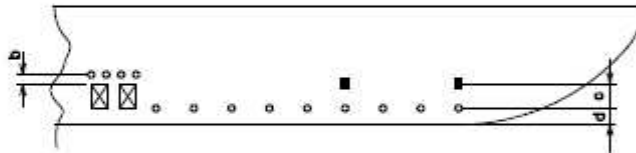
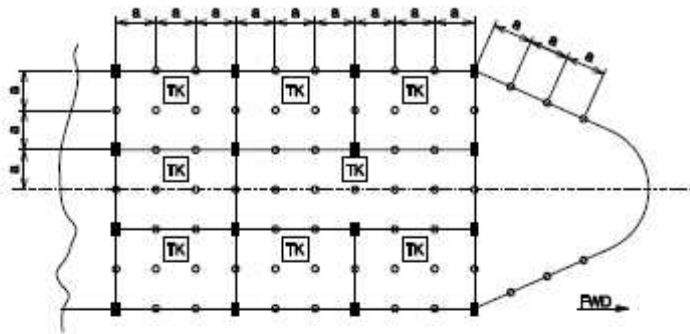


PETROBRAS/E&P/GERLOG/GESTE/ETSPFS010 IV-H1B-DGN



- RECTANGULAR PADEYE
- ROUND PADEYE
- ☒ SEA CHEST/SUBMERGED HULL OPENING
- a - 15 meters maximum
- b - 1 meter
- c - 3 meters
- d - 2 meters

1	TITLE	08-13-96	MAR[N]	
0	ISSUE	06-10-96	MAR[N]	
REV.	DESCRIPTION	DATE	BY	APPROV.
		HULL BOTTOM PADEYES		
		DE-3500.00-6500-941-PEP-002		SHEET: 1 / 1 NO. 1