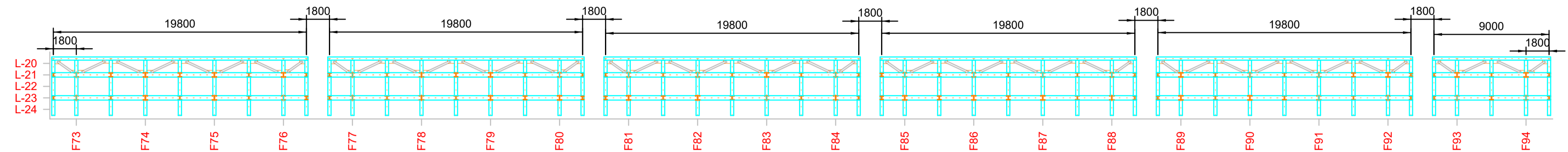
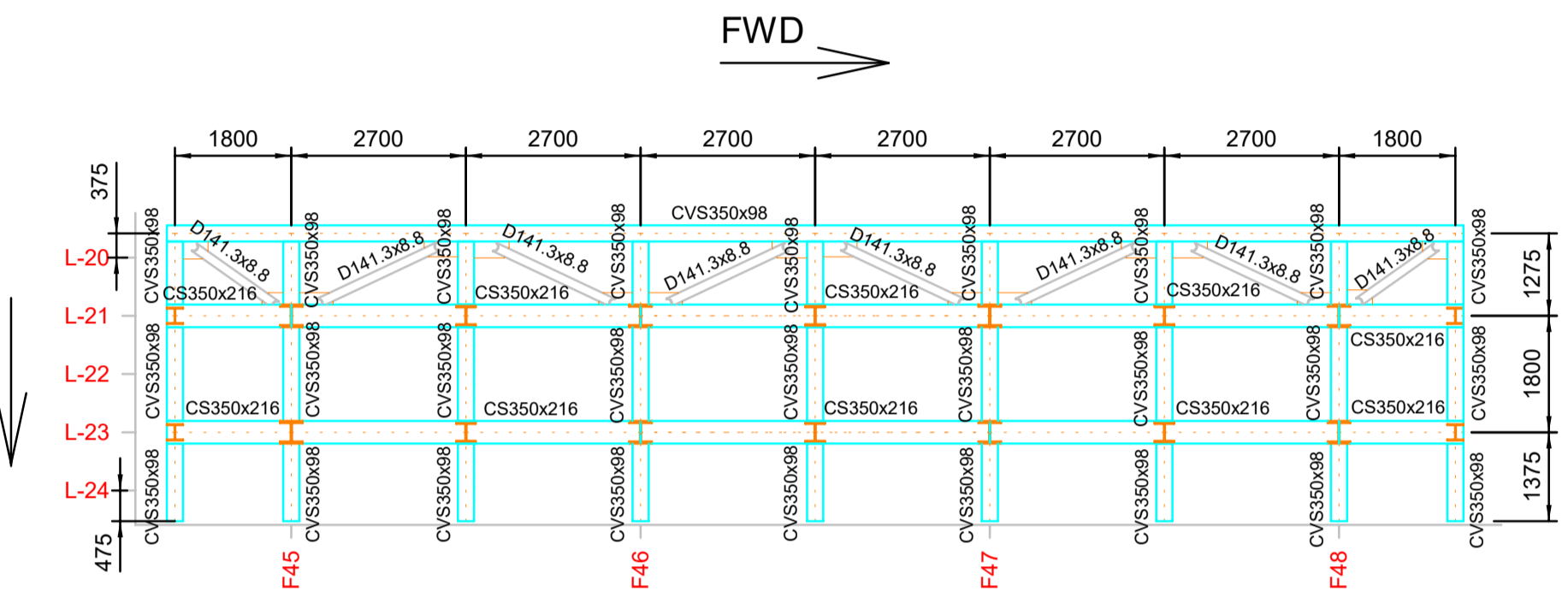


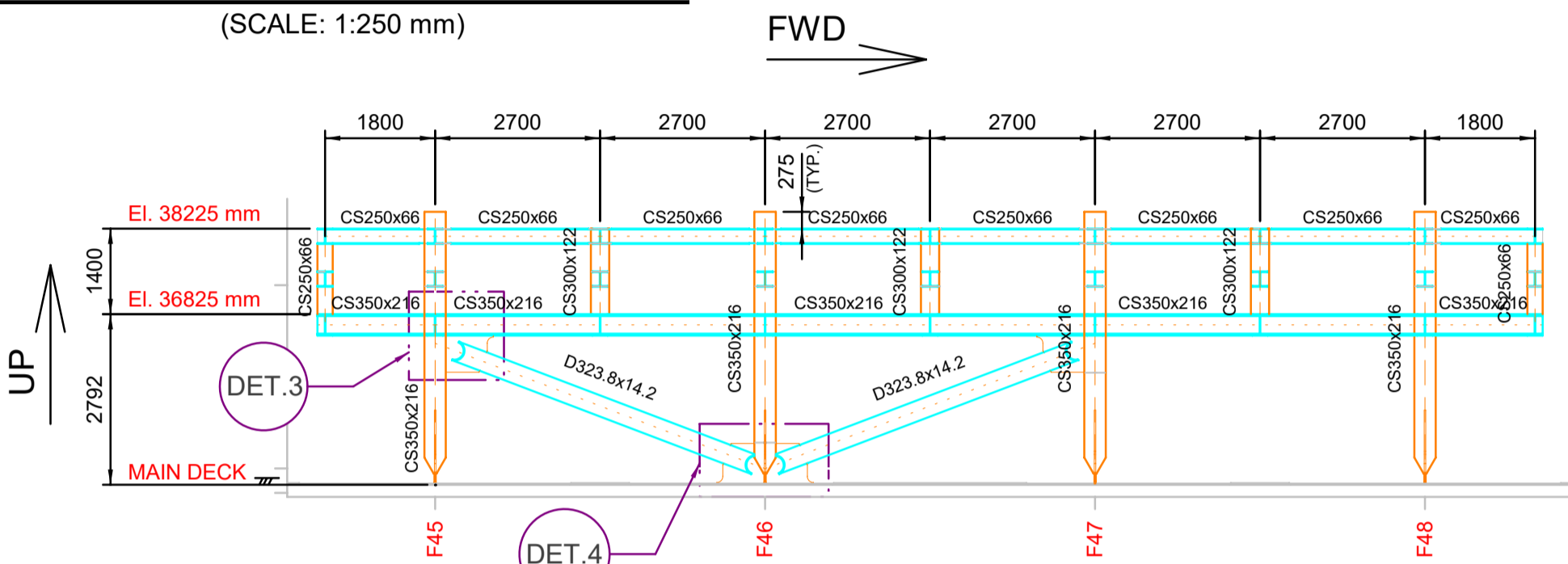
EL.36825 SECTIONS 1 ~ 7
(SCALE: 1:250 mm)



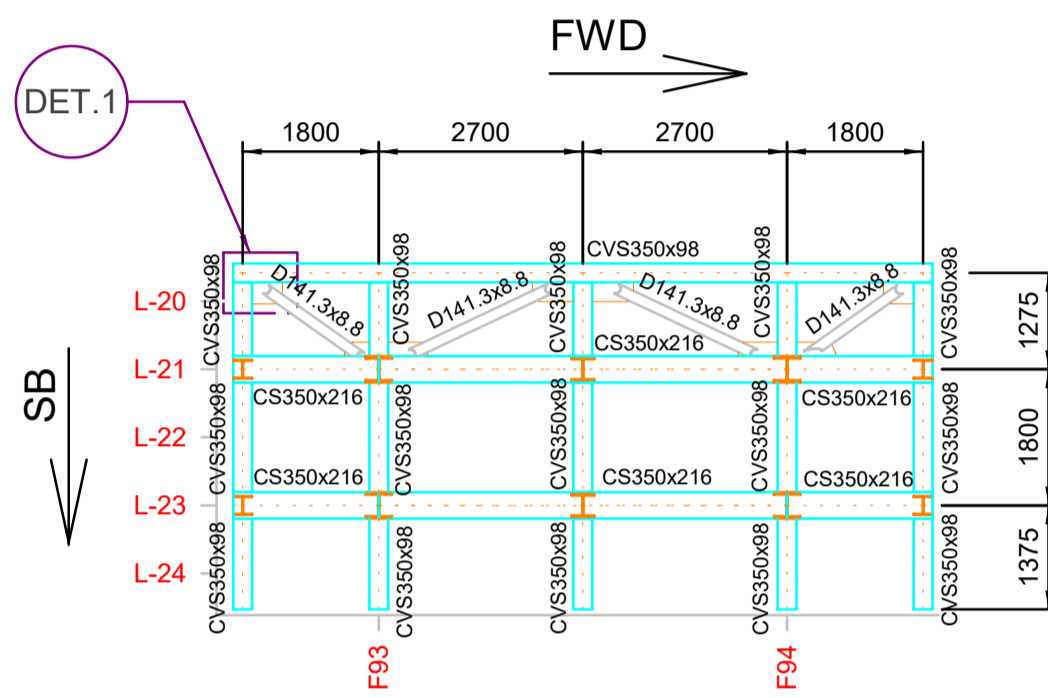
EL.36825 SECTIONS 8 ~ 13
(SCALE: 1:250 mm)



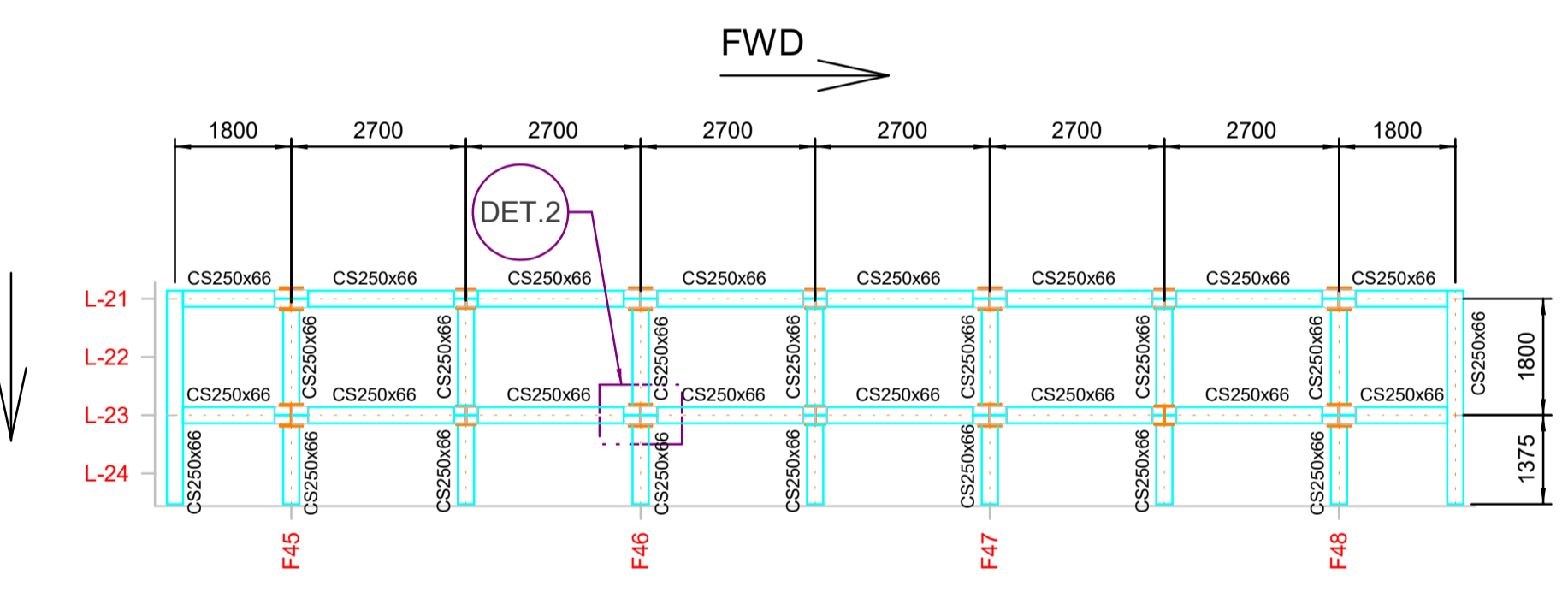
SECTION 1 ~ 12 - EL. 36825 T.O.B
(SCALE: 1:100 mm)



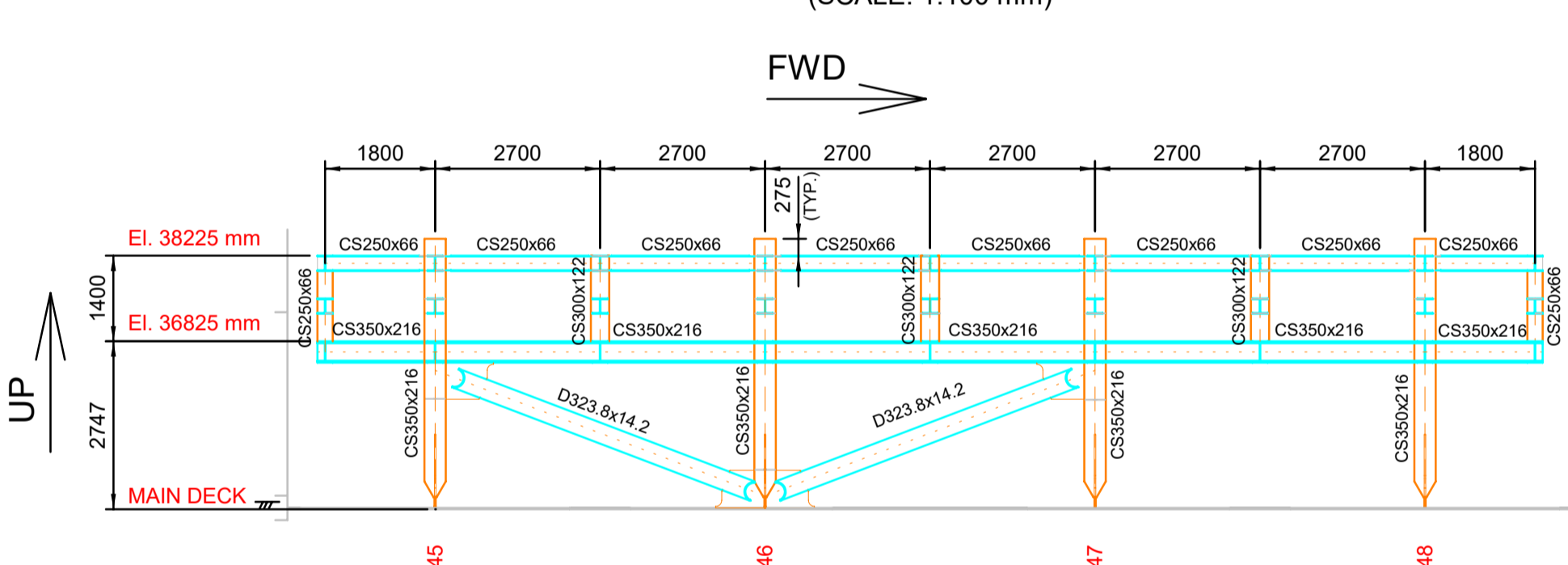
SECTION 1 ~ 12 | L-23
(SCALE: 1:100 mm)



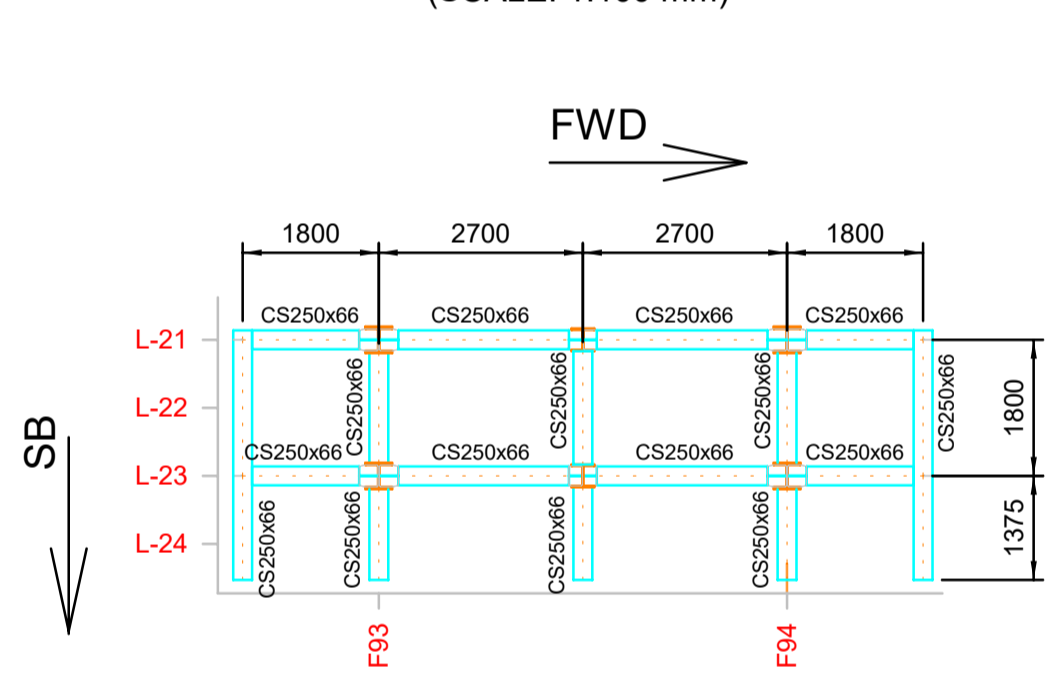
SECTION 13 - EL. 36825 T.O.B
(SCALE: 1:100 mm)



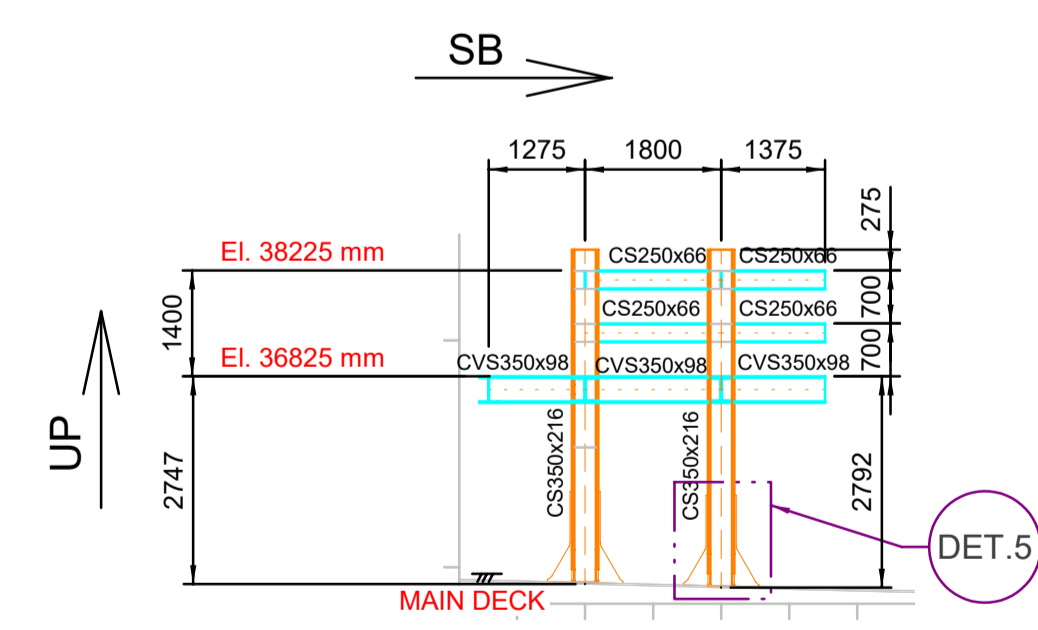
SECTION 1 ~ 12 - EL. 38225 T.O.B
(SCALE: 1:100 mm)



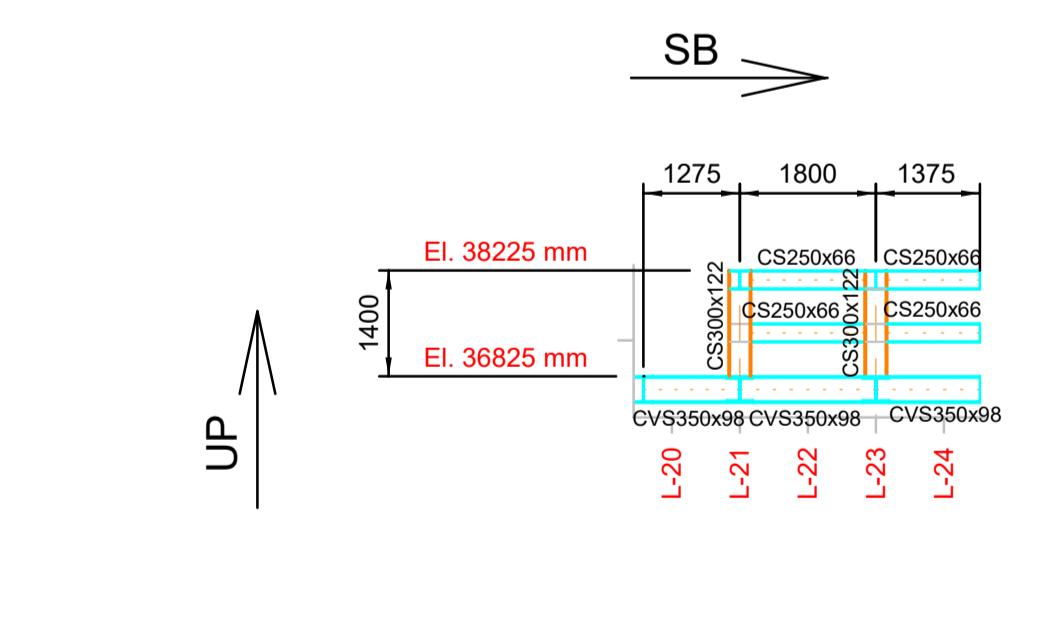
SECTION 1 ~ 12 | L-21
(SCALE: 1:100 mm)



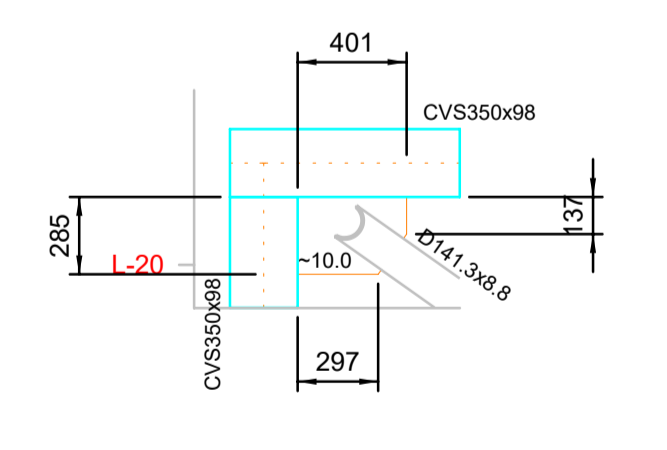
SECTION 13 - EL. 38225 T.O.B
(SCALE: 1:100 mm)



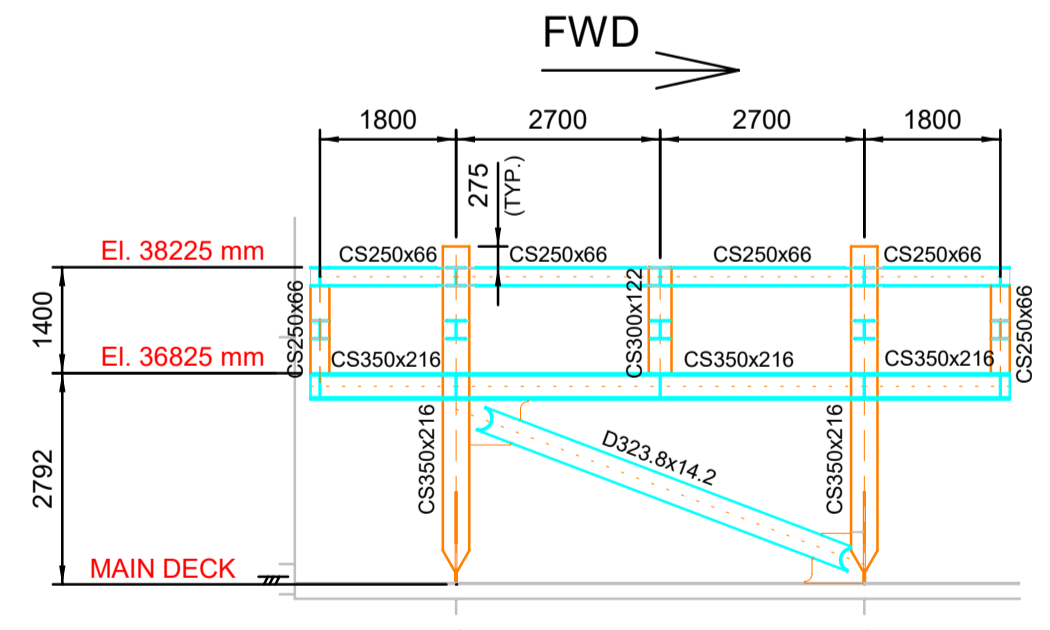
FRAME (TYPICAL)
(SCALE: 1:100 mm)



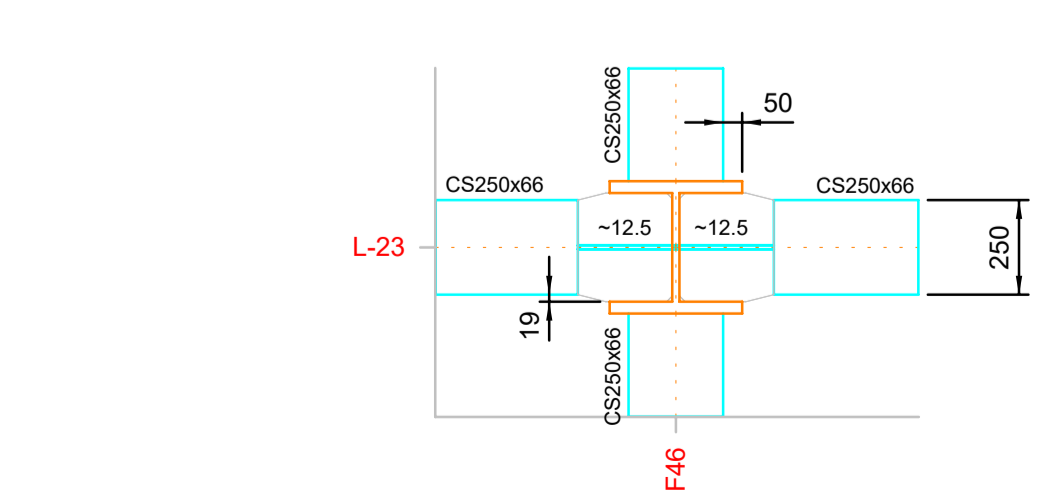
BETWEEN FRAMES (1/2 FRAME - TYPICAL)
(SCALE: 1:100 mm)



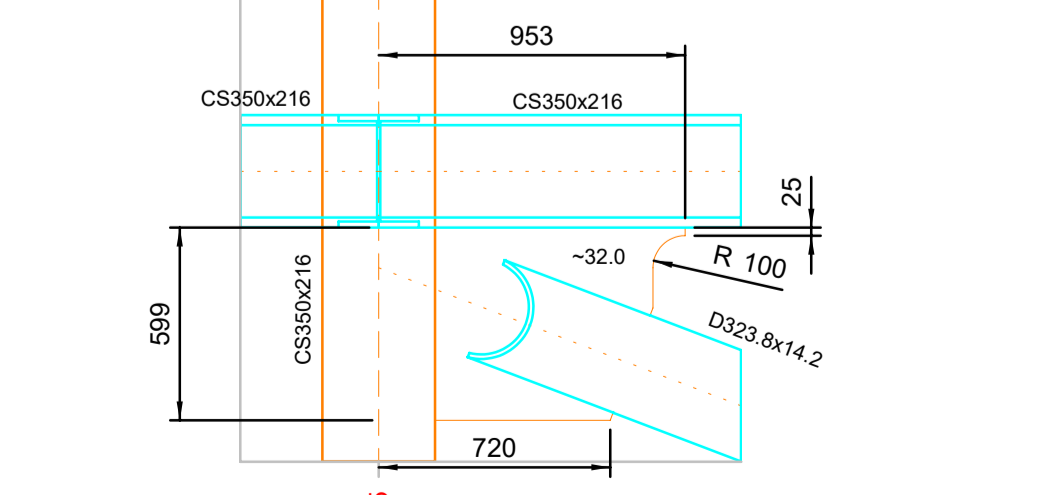
DETAIL 1
(SCALE: 1:25 mm)



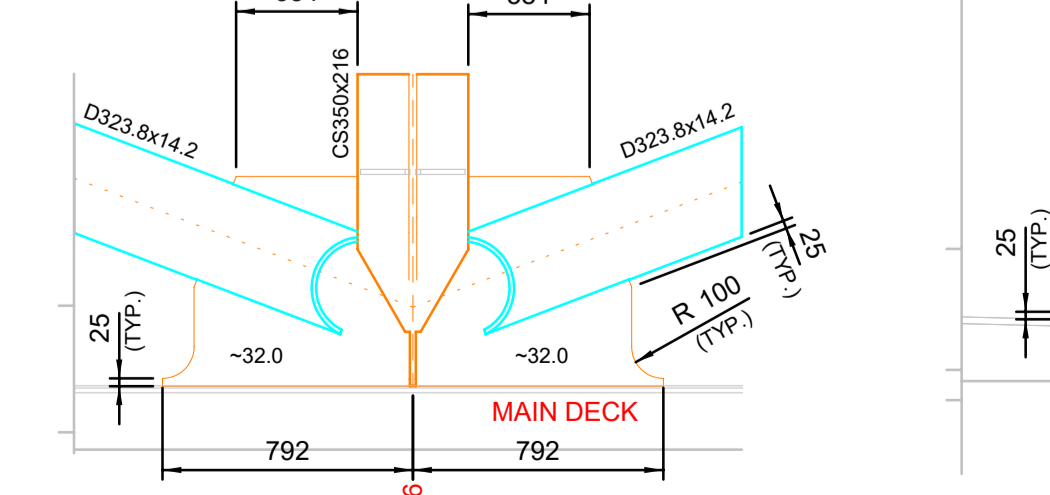
SECTION 13 | L-23
(SCALE: 1:100 mm)



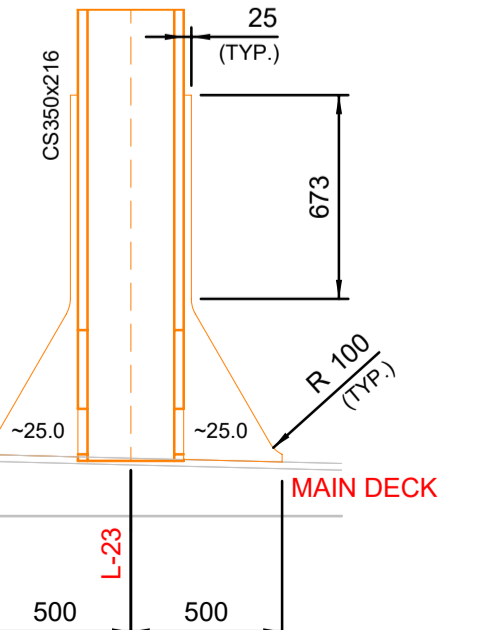
DETAIL 2
(SCALE: 1:20 mm)



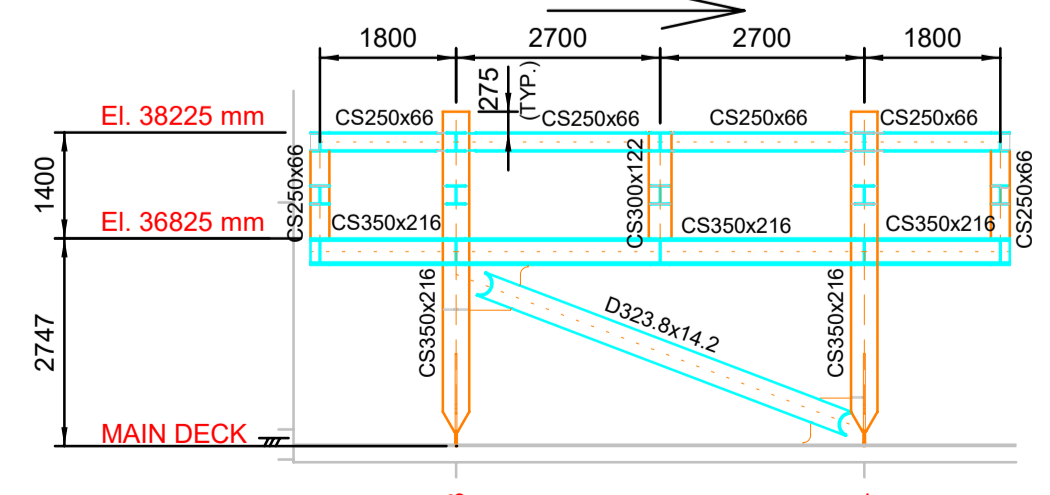
DETAIL 3
(SCALE: 1:25 mm)



DETAIL 4
(SCALE: 1:25 mm)



DETAIL 5
(SCALE: 1:25 mm)



SECTION 13 | L-21
(SCALE: 1:100 mm)

- REFERENCE DOCUMENTS
- 1 - IET-3010.2Q-1351-140-P4X-001 - HULL STRUCTURAL REQUIREMENTS;
 - 2 - I-DE-3010.2Q-1351-140-P4X-000 - HULL GENERAL NOTES AND TYPICAL DETAILS;
 - 3 - IACS COMMON STRUCTURAL RULES FOR BULK CARRIERS AND OIL TANKERS - JAN. 2018;
 - 4 - I-DE-3010.2Q-1351-140-P4X-007 - STEEL GRADES AND STRUCTURAL AREAS CLASSIFICATION PLAN;
- GENERAL NOTES
- 1 - ALL DIMENSIONS ARE IN MILLIMETERS;
 - 2 - THE DESIGN OR SERVICE TEMPERATURE SHALL BE 0°C;
 - 3 - AIR, DRAIN AND RAT HOLES ARE SCOPE OF DETAILED PHASE, ANY OF THESE REPRESENTED IN THIS DOCUMENT ARE FOR ILLUSTRATIVE PURPOSES ONLY;
 - 4 - SCALLOPS ARE SCOPE OF DETAILED ENGINEERING PHASE. ANY OF THESE REPRESENTED IN THIS DOCUMENT ARE FOR ILLUSTRATIVE ONLY;
 - 5 - OPENINGS SHALL BE AVOIDED NEAR ANY BRACKET TOE AREAS 125 mm MINIMUM DISTANCE. THIS REQUIREMENT IS NOT RESTRICTED TO THE ONES PRESENTED IN THIS DOCUMENT. IF NEEDED, NUMERICAL MODELS SHALL CONFIRM WHAT STRESSES AND FATIGUE IN THE REGION ARE WITHIN LIMITS;
 - 6 - IF MATERIAL IS NOT PRESENTED, IT SHALL BE IN ACCORDANCE TO REFERENCE 4.
 - 7 - FOR ALL DETAILS NOT SHOWN IN THIS DRAWING, SEE REFERENCE 2;
 - 8 - FOUNDATION STRUCTURE MUST BE VERIFIED DURING THE DETAILED ENGINEERING PHASE IN ORDER TO REFLECT UPDATED REACTIONS;
 - 9 - OUTFITTINGS REQUIRED FOR OPERATION AND MAINTENANCE ARE DETAILED ENGINEERING PHASE SCOPE.

KEY PLAN

REV.	DESCRIPTION	DATE	EXEC.	CHECK	APPROV.
0	ORIGINAL ISSUE	APR/19/2024	CKTZ	U3ZY	CYEL

INFORMATION IN THIS DOCUMENT IS PROPERTY OF PETROBRAS, BEING PROHIBITED OUTSIDE OF THEIR PURPOSE.
FORM OWNED TO PETROBRAS N-381 REV. L.
AUTOCAD (R) 2022 / I-DE-3010.2Q-1352-140-P4X-012_0.DWG

BR PETROBRAS ESUP

CLIENT: MARLIM LESTE E SUL

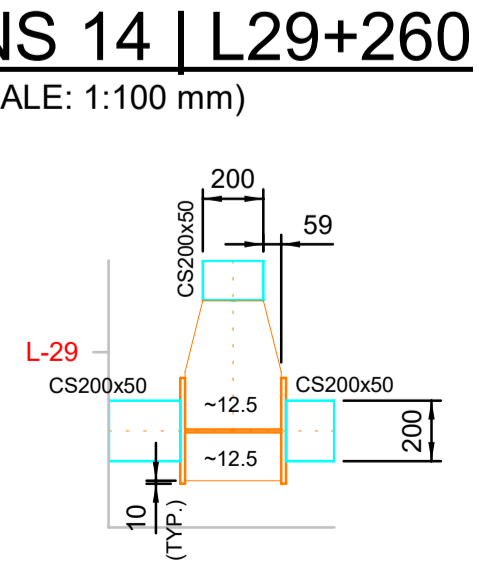
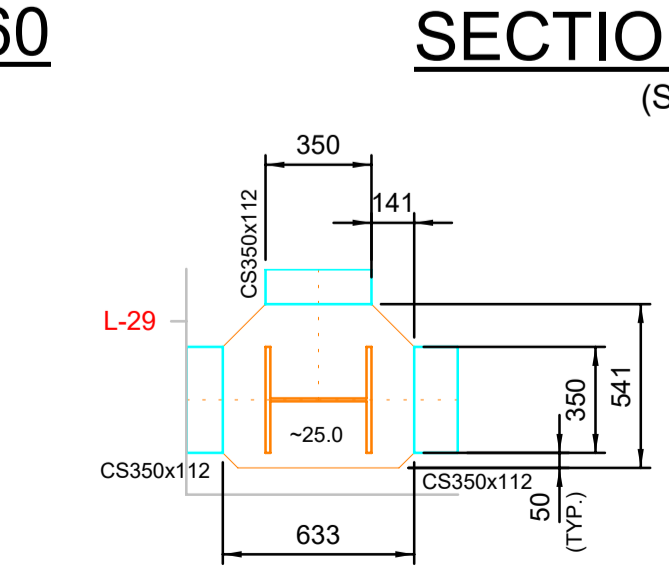
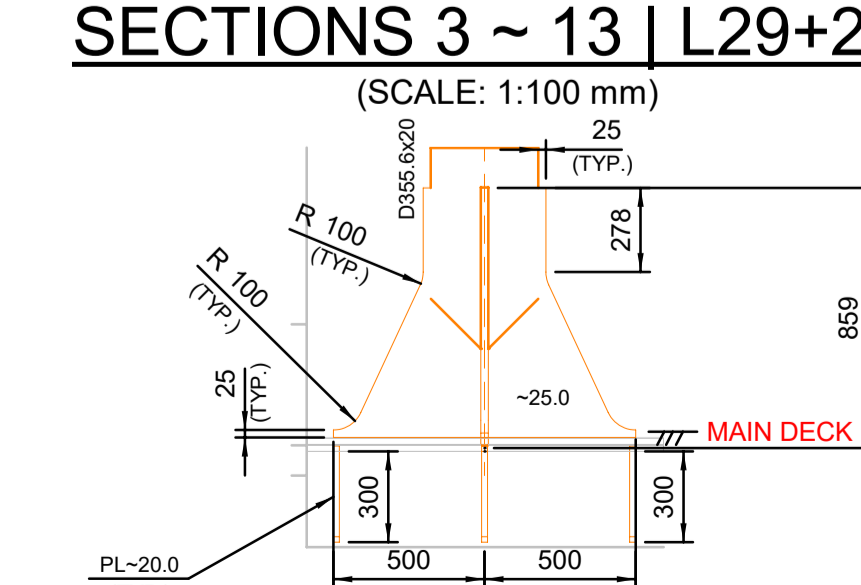
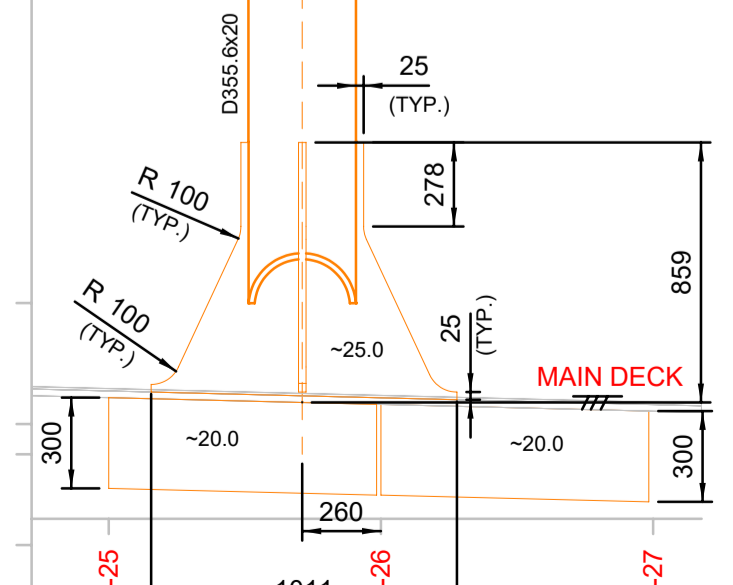
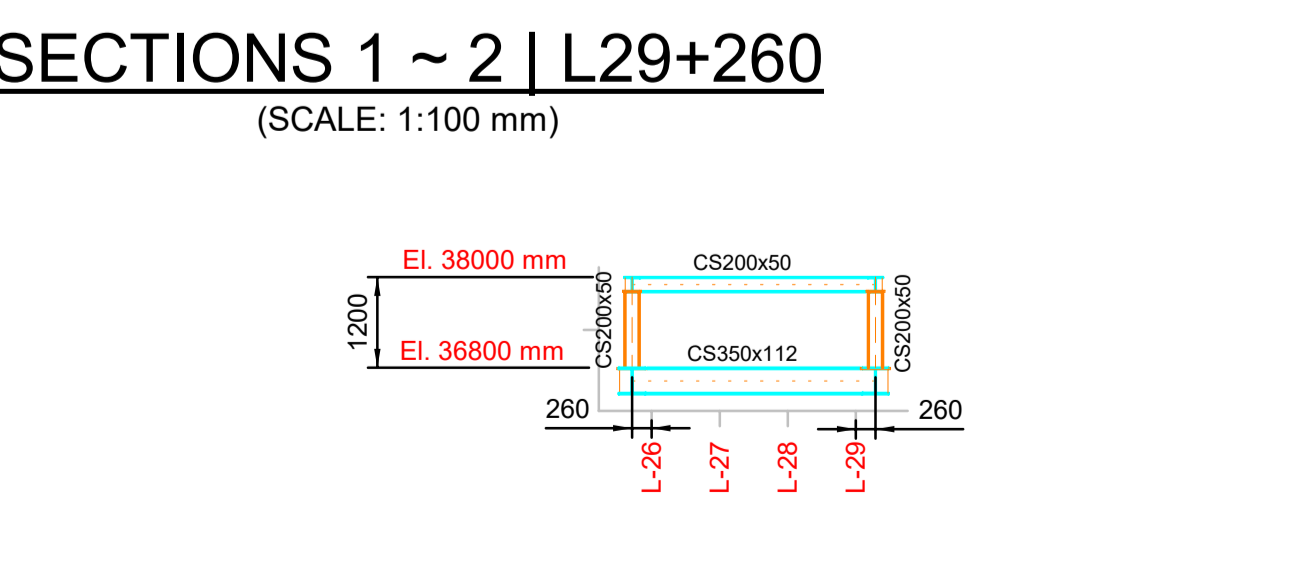
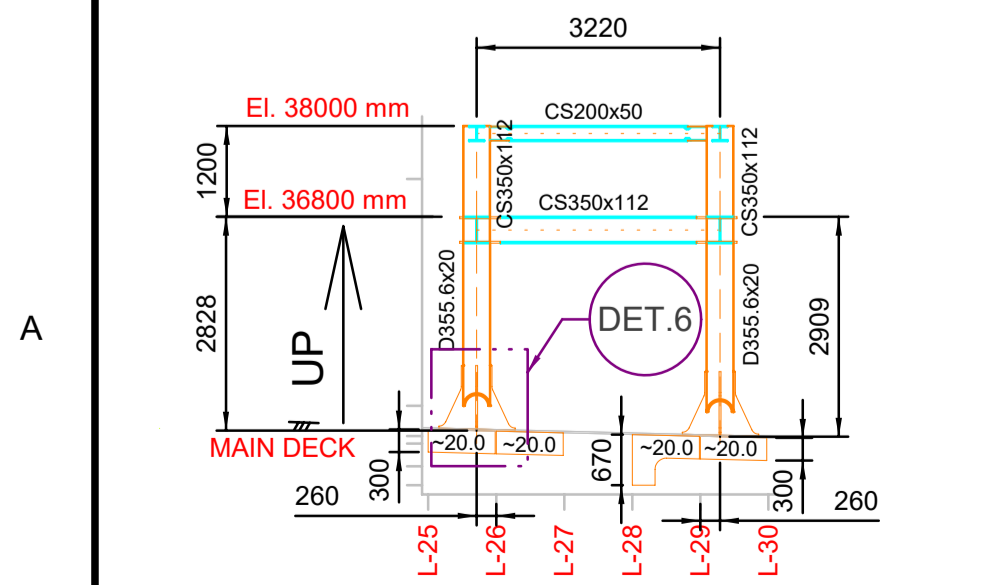
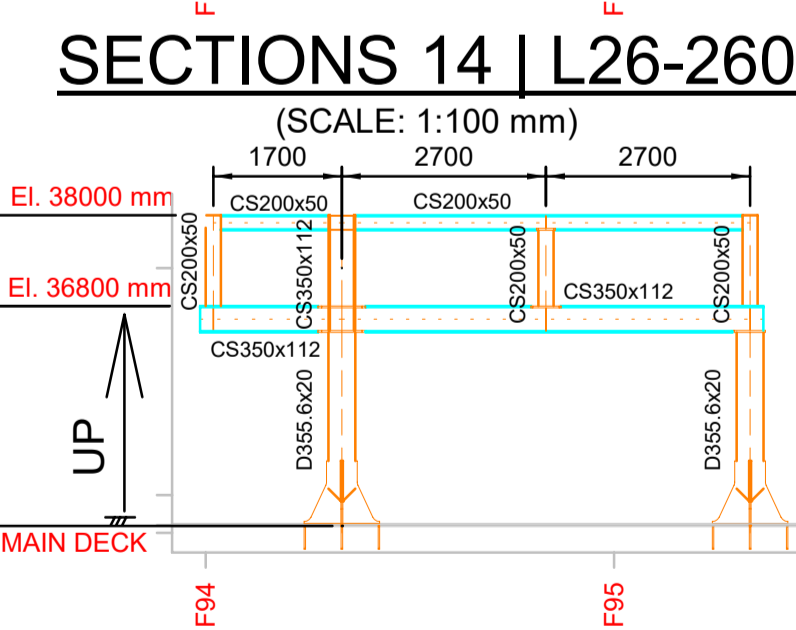
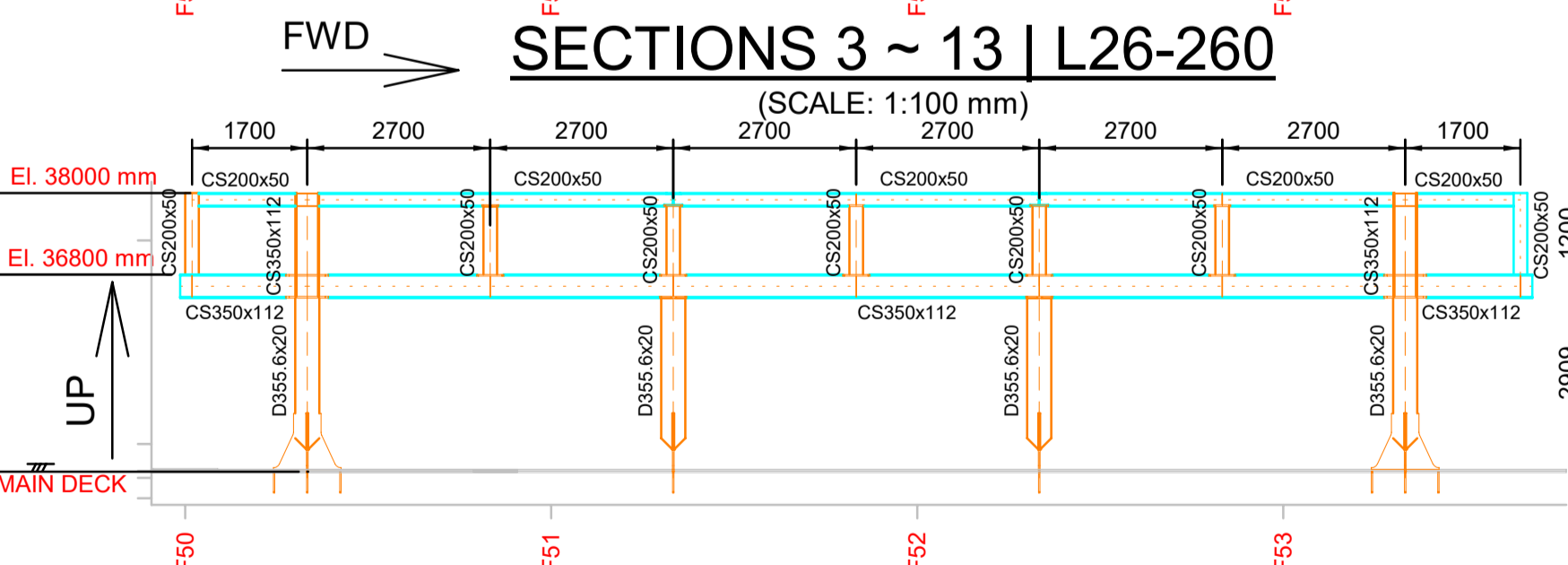
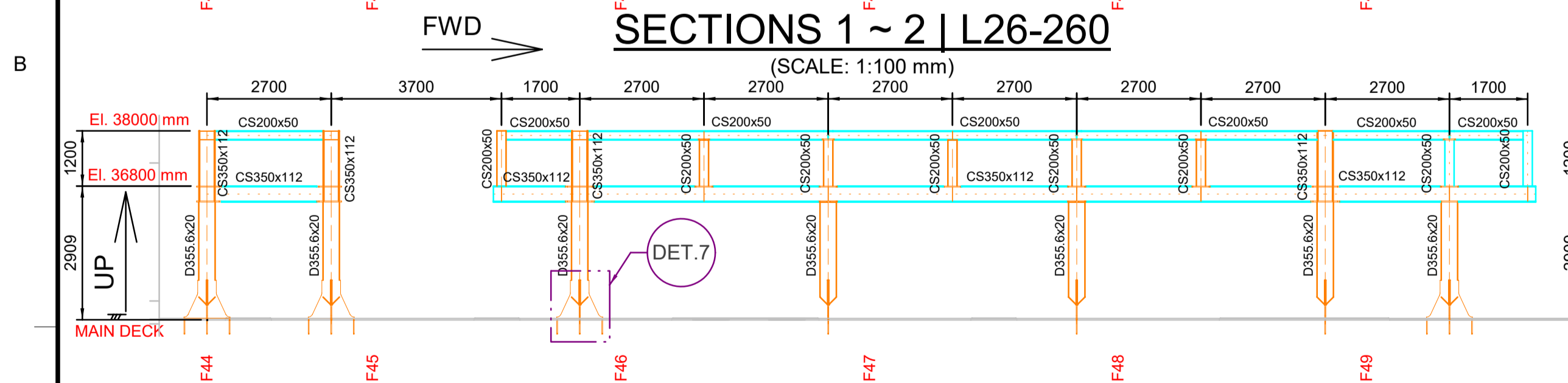
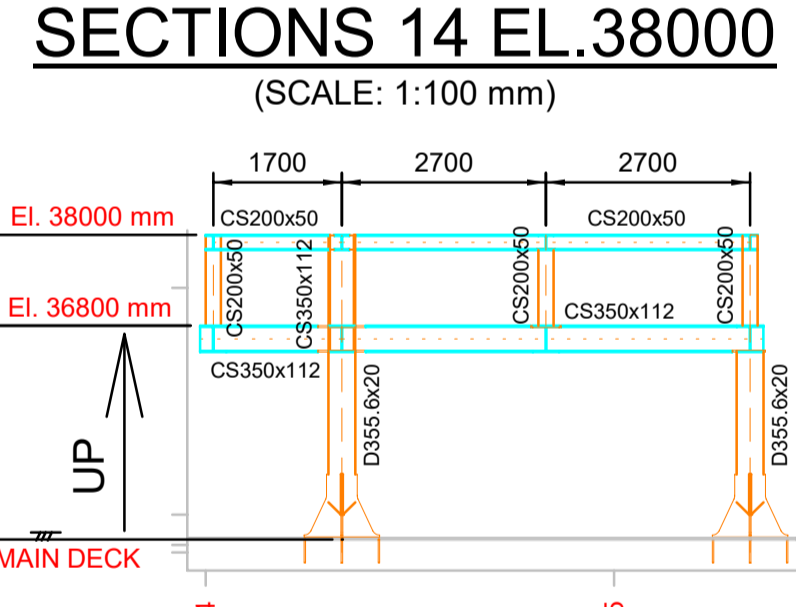
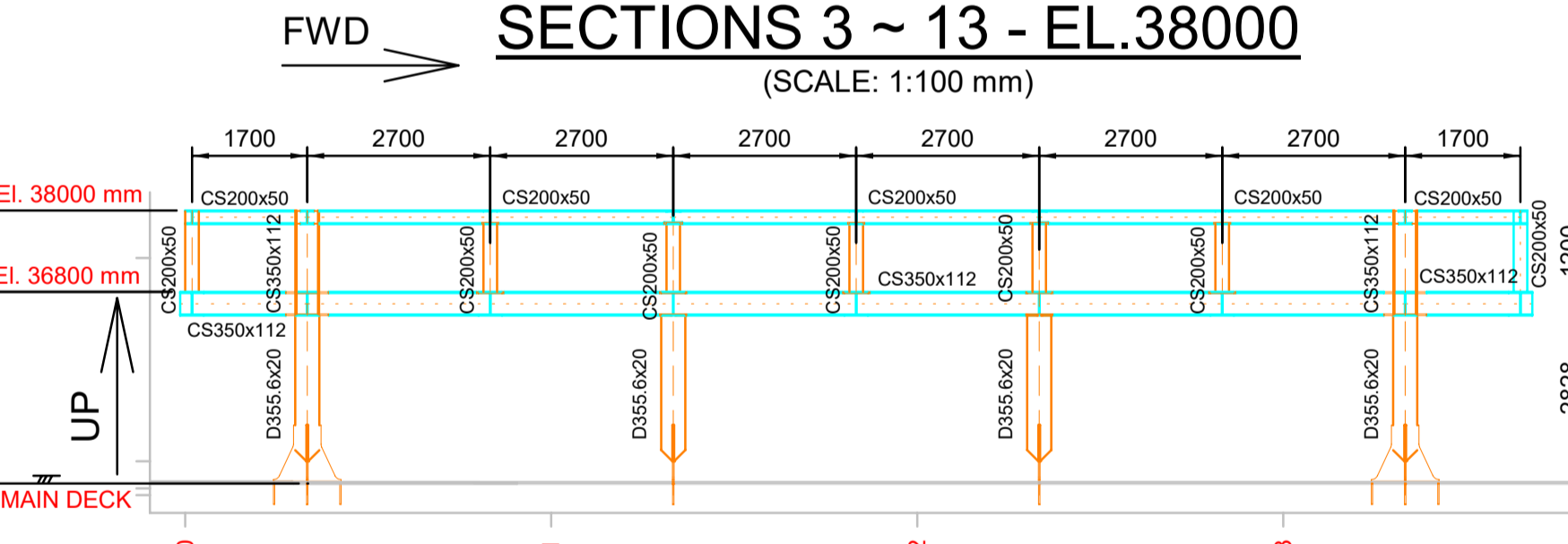
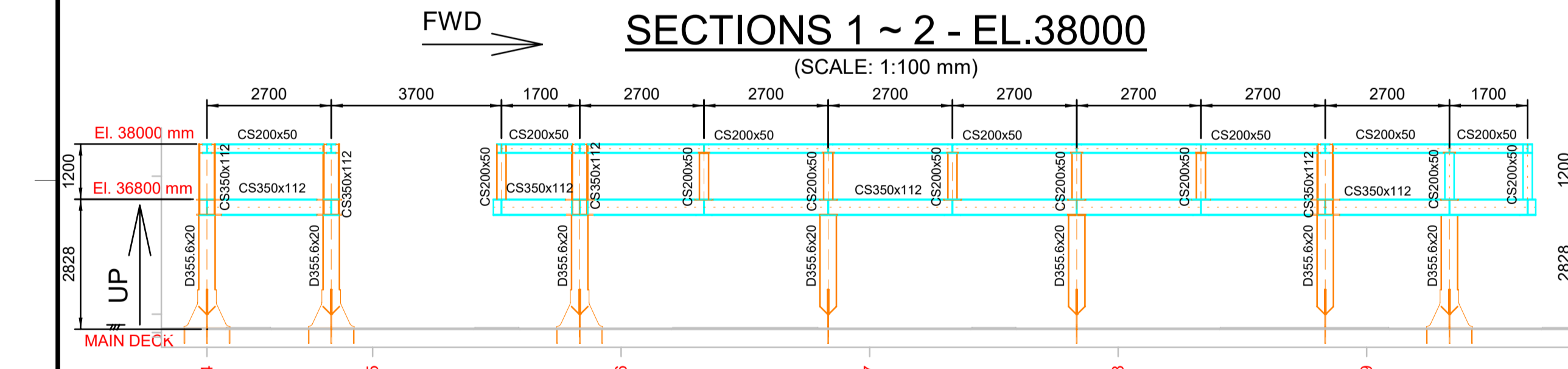
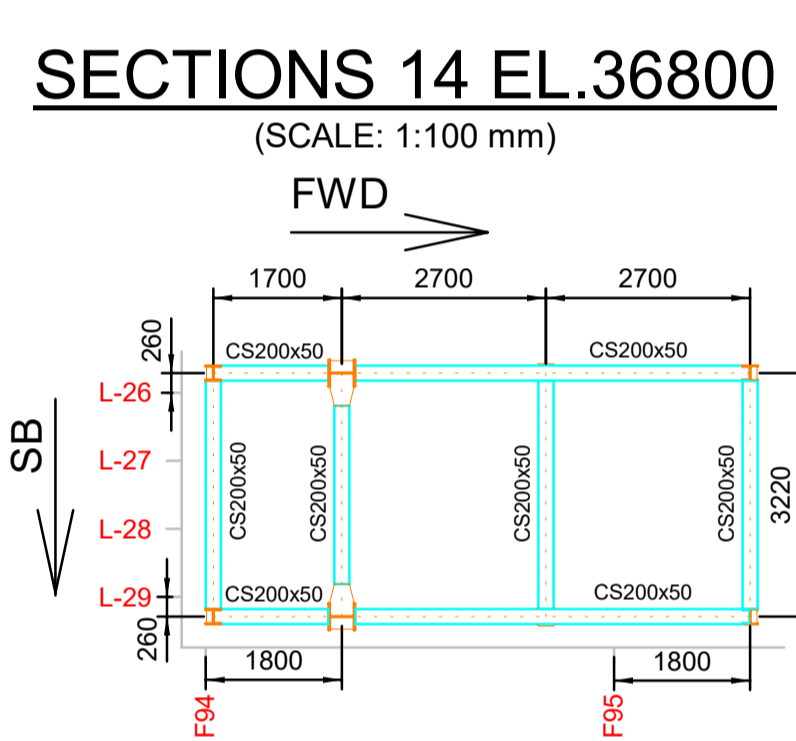
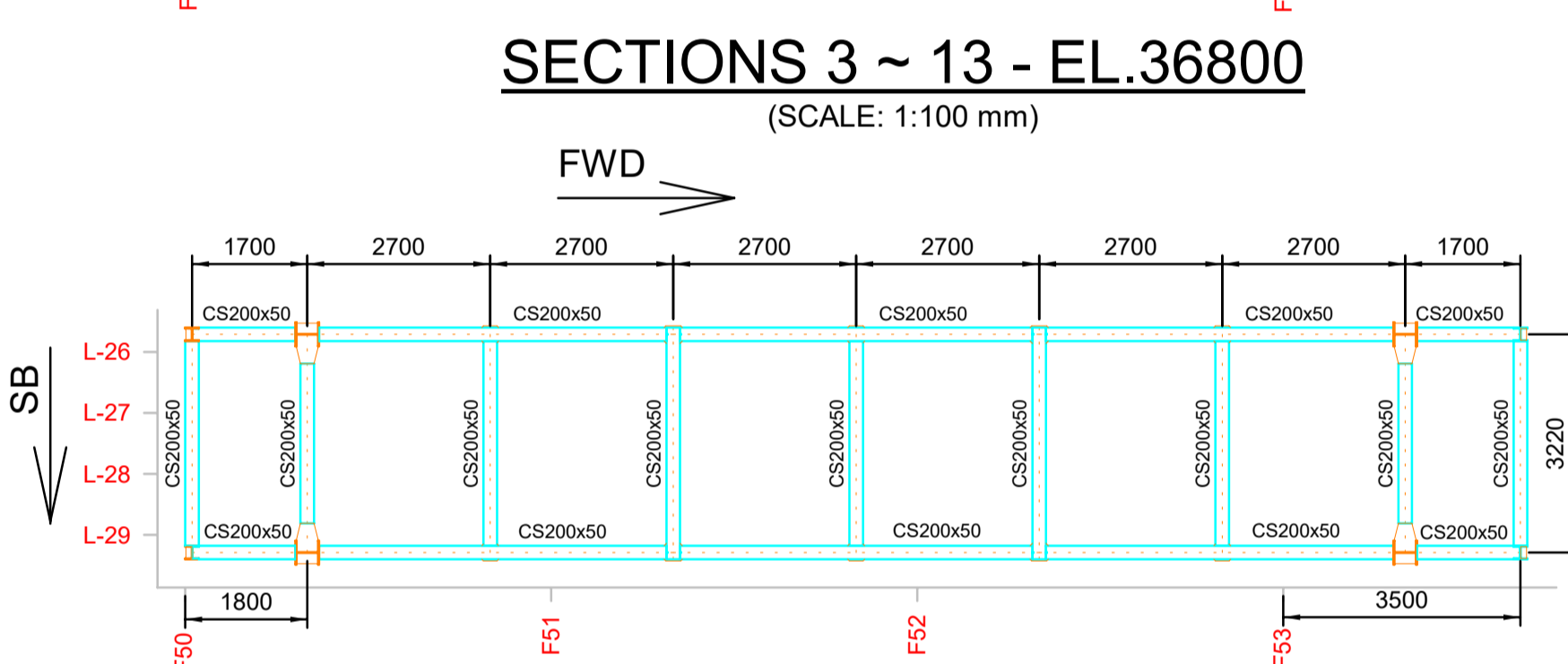
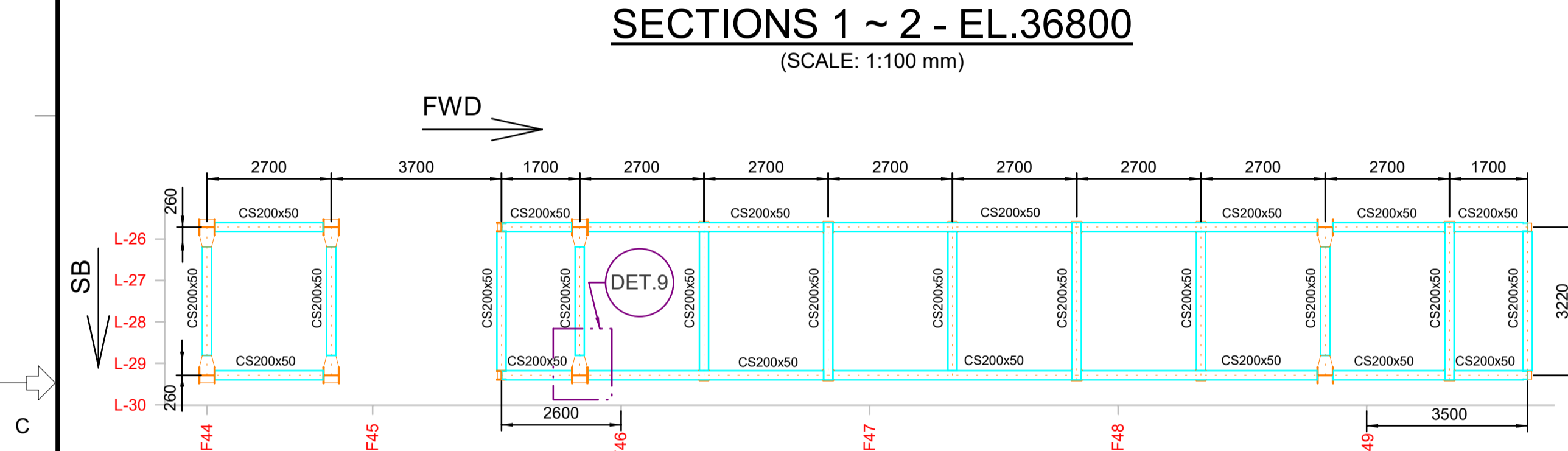
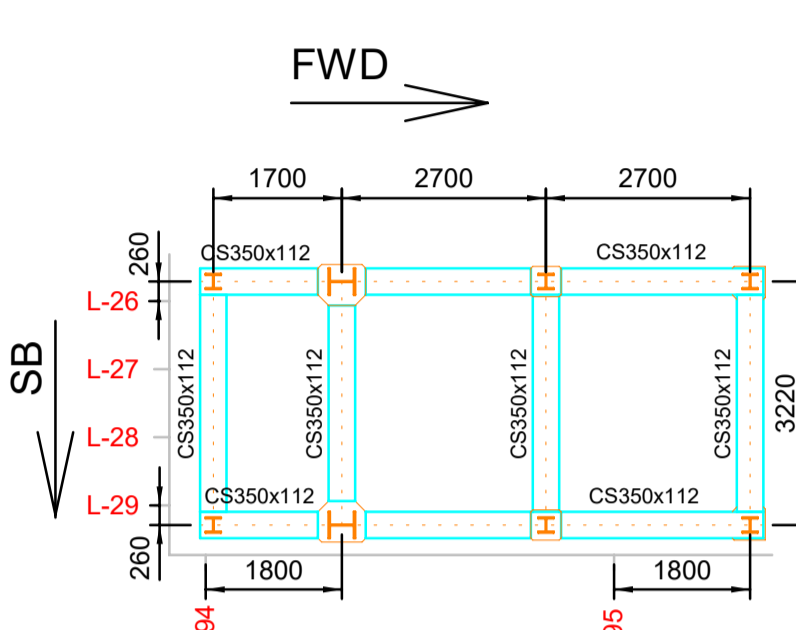
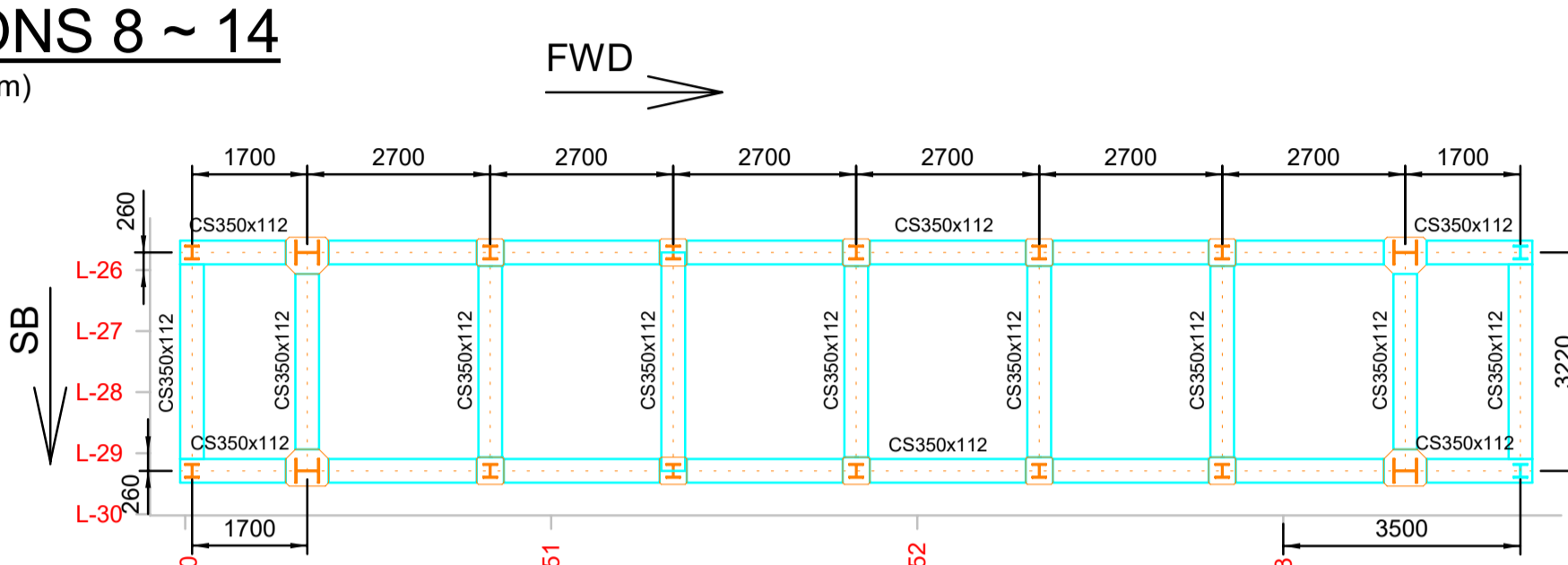
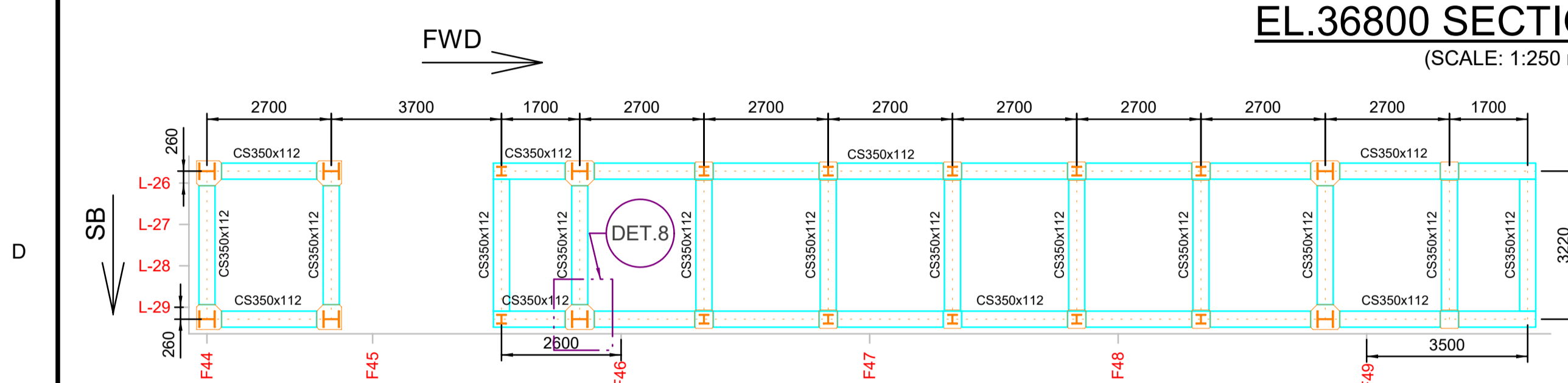
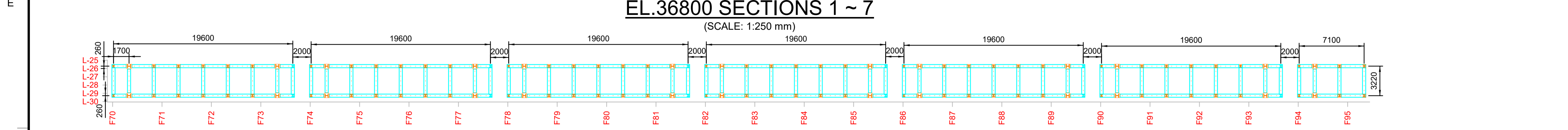
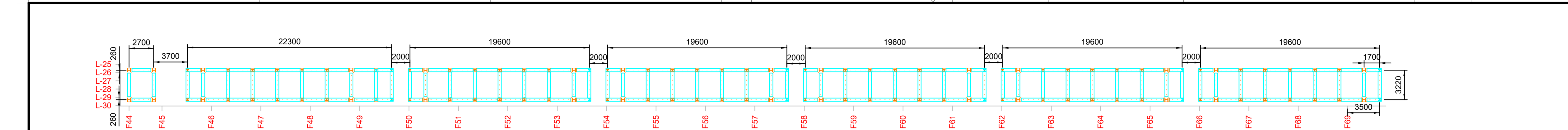
JOB: BASIC DESIGN - REVIT I

AREA: MARLIM LESTE E SUL

TITLE: STARBOARD PIPE RACK

SCALE: SHEET 01 of 02

INTERNAL I-DE-3010.2Q-1352-140-P4X-012



REFERENCE DOCUMENTS

- 1 - I-ET-3010.2Q-1351-140-P4X-001 - HULL STRUCTURAL REQUIREMENTS;
- 2 - I-DE-3010.2Q-1351-140-P4X-001 - HULL GENERAL NOTES AND TYPICAL DETAILS;
- 3 - IACS COMMON STRUCTURAL RULES FOR BULK CARRIERS AND OIL TANKERS - JAN. 2018;
- 4 - I-DE-3010.2Q-1351-140-P4X-007 - STEEL GRADES AND STRUCTURAL AREAS CLASSIFICATION PLAN;

GENERAL NOTES

- 1 - ALL DIMENSIONS ARE IN MILLIMETERS;
- 2 - THE DESIGN OR SERVICE TEMPERATURE SHALL BE 0°C;
- 3 - AIR, DRAIN AND RAT HOLES ARE SCOPE OF DETAILED PHASE, ANY OF THESE REPRESENTED IN THIS DOCUMENT ARE FOR ILLUSTRATIVE PURPOSES ONLY;
- 4 - SCALLOPS ARE SCOPE OF DETAILED ENGINEERING PHASE. ANY OF THESE REPRESENTED IN THIS DOCUMENT ARE FOR ILLUSTRATIVE PURPOSES ONLY;
- 5 - OPENINGS SHALL BE AVOIDED NEAR ANY BRACKET TOE AREAS 125 mm MINIMUM DISTANCE. THIS REQUIREMENT IS NOT RESTRICTED TO THE ONES PRESENTED IN THIS DOCUMENT. IF NEEDED, NUMERICAL MODELS SHALL CONFIRM WHAT STRESSES AND FATIGUE IN THE REGION ARE WITHIN LIMITS;
- 6 - IF MATERIAL IS NOT PRESENTED, IT SHALL BE IN ACCORDANCE TO REFERENCE 4.
- 7 - FOR ALL DETAILS NOT SHOWN IN THIS DRAWING, SEE REFERENCE 2;
- 8 - FOUNDATION STRUCTURE MUST BE VERIFIED DURING THE DETAILED ENGINEERING PHASE IN ORDER TO REFLECT UPDATED REACTIONS;
- 9 - OUTFITTINGS REQUIRED FOR OPERATION AND MAINTENANCE ARE DETAILED ENGINEERING PHASE SCOPE.

KEY PLAN

0	ORIGINAL ISSUE	APR/19/2024	CKTZ	U3ZY	CYEL
REV.	DESCRIPTION	DATE	EXEC.	CHECK	APPROV.

INFORMATION IN THIS DOCUMENT IS PROPERTY OF PETROBRAS, BEING PROHIBITED OUTSIDE OF THEIR PURPOSE. FORM OWNED TO PETROBRAS N-381 REV. L.
AUTOCAD (R) 2022 / I-DE-3010.2Q-1352-140-P4X-012_0.DWG

PETROBRAS		ESUP
CLIENT:	MARLIM LESTE E SUL	
JOB:	BASIC DESIGN - REVIT I	
AREA:	MARLIM LESTE E SUL	
TITLE:	STARBOARD PIPE RACK	
SCALE:	INTERNAL	SHEET 02 of 02
No.	I-DE-3010.2Q-1352-140-P4X-012	